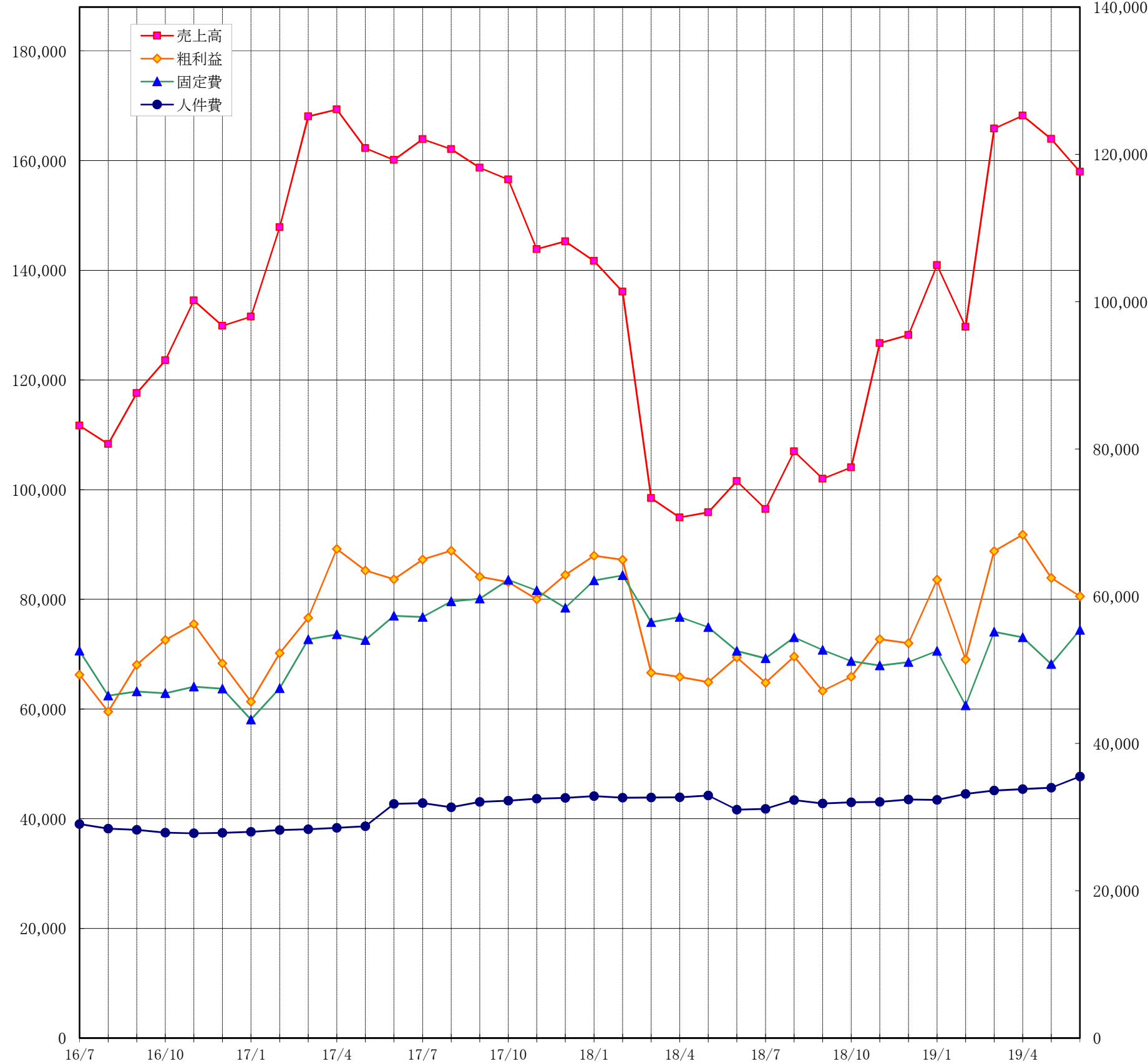


年計グラフ(売上高・粗利益・固定費)

単位:千円



期間	売上高	粗利益	粗利益率	固定費	人件費		
前々期	7	111,689	49,329	44.2%	52,578	29,061	
	8	108,334	44,316	40.9%	46,496	28,436	
	9	117,596	50,699	43.1%	47,047	28,285	
	10	123,587	54,050	43.7%	46,814	27,899	
	11	134,487	56,222	41.8%	47,707	27,804	
	12	129,882	50,873	39.2%	47,446	27,876	
	前期	1	131,536	45,662	34.7%	43,239	27,991
		2	147,868	52,263	35.3%	47,488	28,245
		3	168,041	57,071	34.0%	54,119	28,346
		4	169,325	66,408	39.2%	54,818	28,555
		5	162,256	63,495	39.1%	54,030	28,749
		6	160,115	62,296	38.9%	57,338	31,792
前期	7	163,919	64,977	39.6%	57,154	31,897	
	8	162,073	66,164	40.8%	59,289	31,323	
	9	158,688	62,649	39.5%	59,655	32,066	
	10	156,547	61,899	39.5%	62,219	32,221	
	11	143,836	59,588	41.4%	60,782	32,491	
	12	145,280	62,881	43.3%	58,416	32,606	
	当期	1	141,687	65,497	46.2%	62,134	32,849
		2	136,088	64,948	47.7%	62,823	32,627
		3	98,455	49,616	50.4%	56,463	32,656
		4	94,936	49,046	51.7%	57,178	32,684
		5	95,886	48,333	50.4%	55,788	32,931
		6	101,574	51,691	50.9%	52,554	31,023
当期	7	96,462	48,261	50.0%	51,548	31,113	
	8	106,993	51,793	48.4%	54,404	32,303	
	9	102,011	47,140	46.2%	52,698	31,850	
	10	104,074	49,060	47.1%	51,183	32,009	
	11	126,705	54,166	42.7%	50,573	32,066	
	12	128,214	53,624	41.8%	51,033	32,406	
	当期	1	140,947	62,234	44.2%	52,564	32,350
		2	129,701	51,398	39.6%	45,159	33,149
		3	165,833	66,102	39.9%	55,167	33,619
		4	168,221	68,361	40.6%	54,404	33,802
		5	163,940	62,485	38.1%	50,770	33,992
		6	157,979	59,975	38.0%	55,413	35,513